



AWT GROUP

MEMBER OF PKP CARGO GROUP

**ADVANCED WORLD TRANSPORT, AWT ČECHOFRACHT, AWT ROSCO,
AWT RAIL HU, AWT REKULTIVACE**



AWT GROUP, MEMBER OF PKP CARGO GROUP

- **ONE OF THE MOST IMPORTANT PROVIDERS OF RAIL FREIGHT SERVICES IN EUROPE**
- **SECOND BIGGEST RAIL CARRIER IN THE CZECH REPUBLIC**
- **PROVIDES COMPREHENSIVE AND MODERN SOLUTIONS CHIEFLY TO MAJOR INDUSTRIAL ENTERPRISES**
- **FOCUSED ON CENTRAL AND EASTERN EUROPE**
- **HAS AN EXTENSIVE FLEET OF MORE THAN 160 LOCOMOTIVES AND 5,000 WAGONS**
- **IN THE CZECH REPUBLIC IT OWNS THE OSTRAVA-PASKOV INTERMODAL TRANSPORT TERMINAL**
- **OPERATES MORE THAN 60 RAIL SIDINGS**
- **OWNS MORE THAN 400 KM OF ITS OWN TRACKS**
- **EMPLOYS MORE THAN 2,100 PEOPLE**



WE STAND ON SOLID FOUNDATIONS

- 1952** OKR - Doprava and Čechofracht founded
- 2010** Experience from rail transport and shipping brought together and one strong entity created under the **AWT** brand
- 2015** Merger with **PKP CARGO**, the second largest rail carrier in Europe



MORE THAN 60 YEARS' EXPERIENCE IN TRANSPORT AND LOGISTICS

AWT IN NUMBERS

2 NUMBER TWO ON THE RAILWAYS

AWT IS PART OF PKP CARGO GROUP – THE SECOND BIGGEST RAIL CARRIER IN EUROPE

64 YEARS OF EXPERIENCE

IN RAIL TRANSPORT AND FREIGHT FORWARDING

160 LOCOMOTIVES

400 KM OF OWN TRACK

WITH MORE THAN ONE THOUSAND SWITCHES

2,100 EMPLOYEES

ROUGHLY THE NUMBER OF PEOPLE EMPLOYED BY AWT GROUP

5,000 TRAIN WAGONS

80,000 CONTAINERS AND TRAILERS

ARE TRANSLOADED AT THE OSTRAVA-PASKOV TERMINAL

14,000,000 TONNES OF GOODS

AMOUNTS TO ANNUAL HAULAGE

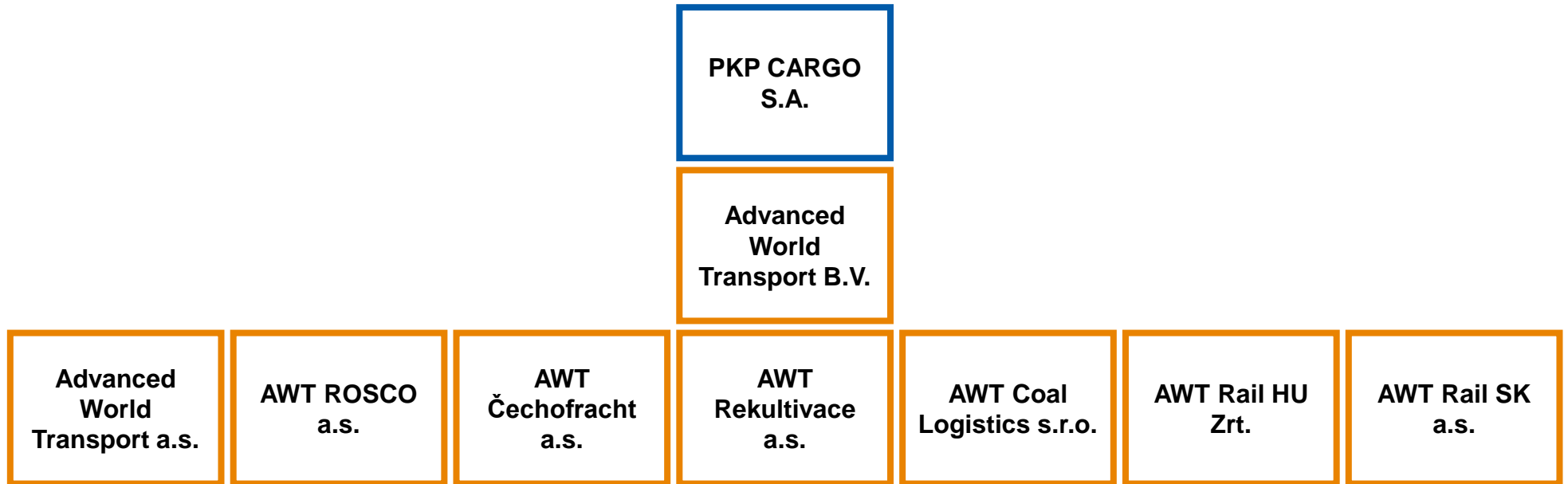
30,000,000 TONNES OF FREIGHT

ARE MOVED EACH YEAR AT THE 60 RAIL SIDINGS OPERATED BY AWT

2,154,000,000

TONNE-KILOMETRES

STRUCTURE OF AWT GROUP



AWT Group is understood to mean a group of separate, independent companies that use the same logo and corporate identity licenced from the parent company Advanced World Transport B.V.



AWT SERVICES

- **RAIL TRANSPORT**
- **RAIL FREIGHT FORWARDING**
- **OPERATION OF RAIL SIDINGS**
- **RAILWAY CONSTRUCTION AND TRACK SERVICES**
- **INTERMODAL TRANSPORT**
 - OSTRAVA-PASKOV TERMINAL
- **LEASE, REPAIR AND CLEANING, COMPREHENSIVE MANAGEMENT OF TRAIN WAGONS**
- **RECLAMATION AND CONSTRUCTION WORK**



RAIL TRANSPORT

- **ONE OF THE MOST IMPORTANT PROVIDERS OF RAIL CARRIER SERVICES IN EUROPE**
- **SECOND BIGGEST RAIL CARRIER IN THE CZECH REPUBLIC**
- **ANNUAL HAULAGE OF ALMOST 14 MILLION TONNES OF GOODS**
- **DOMESTIC AND INTERNATIONAL TRANSPORT**
- **TRANSPORT USING BOTH ENTIRE TRAINS AND SETS OF WAGONS**
- **SPECIAL AND SINGULAR SHIPMENTS**
- **COOPERATION WITH COLLABORATING CARRIERS IN EUROPE**
- **REPRESENTATIVE OFFICE IN HUNGARY VIA AWT RAIL HU**



RAIL FORWARDING

Rail forwarding services have been provided through the traditional company **AWT Čechofracht** for more than 60 years already.

- **CUSTOMISED, COMPREHENSIVE TRANSPORT SOLUTIONS (3PL SOLUTIONS)**
- **UTILISATION OF THE EXTENSIVE AWT FLEET AS WELL AS FREE CAPACITY ON THE MARKET**
- **NOT RELIANT ON ONE TRANSPORT PROVIDER, EITHER IN THE CZECH REPUBLIC OR ABROAD**
- **ARRANGEMENT OF FOLLOW-UP TRANSPORT, INCLUDING CREATION OF ROAD-RAIL-ROAD LOGISTIC CHAINS**



RAIL SIDINGS OPERATION

- **OPERATION OF TRACKS AND RAIL TRANSPORT ON SIDINGS**
- **PROVISION OF ACCOMPANYING SERVICES – UNLOADING, LOADING, BELT HAULAGE, AREA MAINTENANCE, ISSUANCE OF CONSIGNMENT NOTES, CONSIGNMENT WEIGHING AND PACKING, INTER-FACTORY ROAD TRANSPORT**
- **TRACK INSPECTION AND MAINTENANCE**
- **“SAFETY CONSULTANT” SERVICES IN CONNECTION THE HAULAGE OF DANGEROUS GOODS BY RAIL (RID) AND ROAD (ADR)**



RAILWAY CONSTRUCTION AND TRACK SERVICES

- **CONSTRUCTION AND RECONSTRUCTION OF RAILWAY CORRIDORS AND SIDINGS**
- **CONSTRUCTION AND RECONSTRUCTION OF SPECIAL RAILWAY ENGINEERING PROJECTS (CRANE, TRAM AND NARROW-GAUGE RAILWAYS)**
- **REGULAR TRACK AND SWITCH MAINTENANCE ON OWN AND EXTERNAL INFRASTRUCTURE**
- **PROVISION OF LOGISTICS OF HAULAGE OF CONSTRUCTION AGGREGATE TO MAJOR CORRIDOR CONSTRUCTION PROJECTS ON INFRASTRUCTURE OWNED BY THE RAILWAY INFRASTRUCTURE ADMINISTRATION (RIA)**
- **ASSEMBLY, MAINTENANCE AND REPAIR OF COMMUNICATION SECURITY EQUIPMENT, IMPLEMENTATION OF RADIO BROADCASTING NETWORKS**
- **OWN MEANS OF MECHANISATION AND ASSEMBLY BASED IN KARVINÁ**



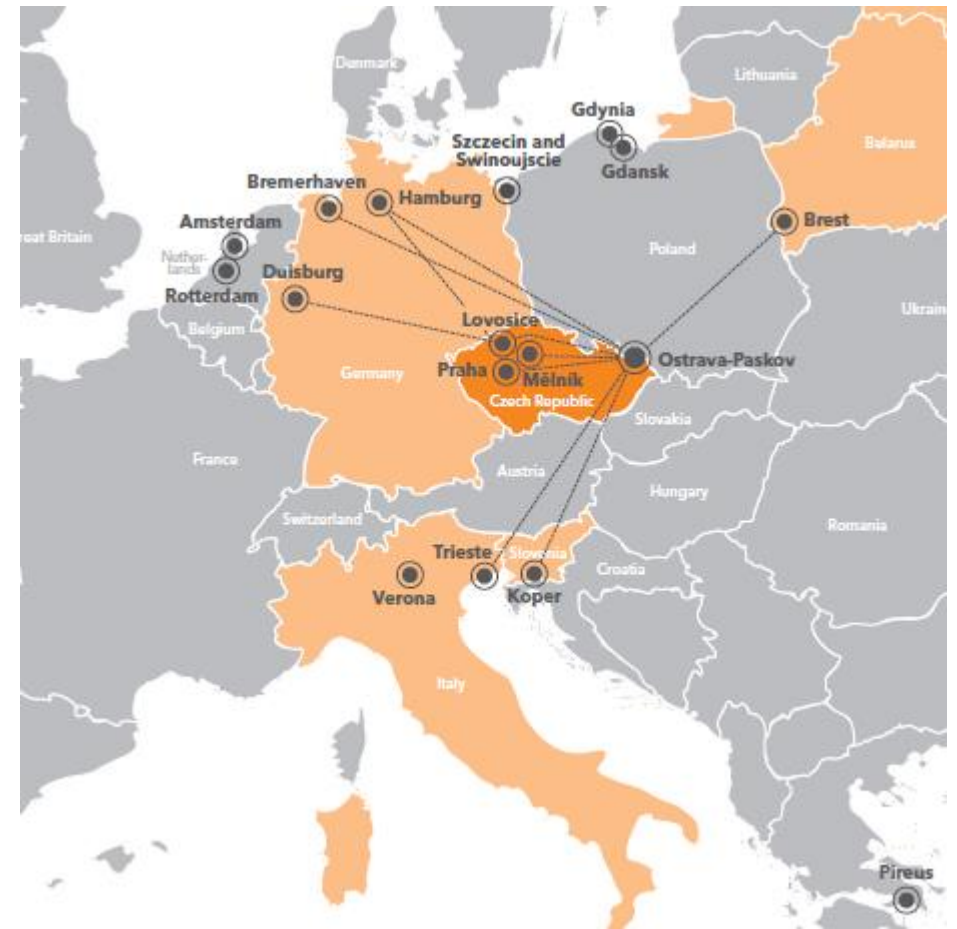
INTERMODAL TRANSPORT

- **OPERATION OF ENTIRE TRAINS ALLOWING TRANSLOADING OF ISO CONTAINERS, TRAILERS AND EXCHANGEABLE EXTENSIONS/TRAILER BODIES**
- **TRANSPORT USING ENTIRE TRAINS (REGULAR, AD-HOC) IN THE CZECH REPUBLIC AND ACROSS EUROPE**
- **WIDE NETWORK OF PARTNERS ON RAILWAYS AND IN PORTS**
- **PROVISION OF LOCOMOTIVES, TRACTIIONS, ENGINE DRIVERS AND WAGONS**
- **TRACK & TRACE**
- **TRANSPORT IN THE JUST-IN-TIME REGIME**
- **BIGGEST OPERATOR OF THE ACTS (ROLLER CONTAINER) SYSTEM IN CENTRAL EUROPE**
- **TRANSPORT SERVICES FOR IMPORTANT INTERMODAL TRANSPORT OPERATORS, FORWARDING COMPANIES AND INDEPENDENT COMPANIES**



OSTRAVA-PASKOV TERMINAL

- **CLOSE PROXIMITY TO IMPORTANT INDUSTRIAL ZONES AND THE POLISH AND SLOVAKIAN BORDERS**
- **TERMINAL WITH A CAPACITY OF 2,400 TEU AND STORAGE AND HANDLING AREA OF 31,000 M²**
- **SIX CONTAINER AND TRAILER LOADERS**
- **TRANSLOADING OF CONTAINERS, TRAILERS AND EXCHANGEABLE EXTENSIONS**
- **SHORT-TERM AND LONG-TERM CONTAINER STORAGE**
- **CONTAINER REPAIR AND CLEANING**
- **ADJOINING RAILWAY STATION (OWNED AND OPERATED BY AWT) HAS 9 TRACKS, THE LONGEST BEING 610 M**



RENTAL, REPAIR AND CLEANING, COMPREHENSIVE MANAGEMENT OF TRAIN WAGONS

- **RENTAL OF FREIGHT WAGONS**
- **MAINTENANCE AND REPAIR OF TRAIN WAGONS**
- **CLEANING OF TANK CARS AND OTHER TYPES OF WAGONS, TANK TRUCKS AND ROAD CONTAINERS**
- **HANDLING OF HAZARDOUS WASTE AND WASTE DISPOSAL**

Through **AWT ROSCO**, we manage a fleet of more than 5,000 freight train wagons:

- OPEN, HIGH-WALL AND HOPPER WAGONS INTENDED FOR THE TRANSPORT OF COAL AND SIMILAR LOOSE GOODS
- TANK CARS FOR TRANSPORTING FUEL AND MINERAL PRODUCTS
- CONTAINER WAGONS
- ACTS (ROLLER CONTAINER) WAGONS



RECLAMATION AND CONSTRUCTION WORK

In addition to transport, AWT group, through **AWT Rekultivace**, has extensive experience with reclamation, groundwork and construction as well as with waste handling and disposal.

- **RECLAMATION WORK**
- **GROUNDWORK**
- **CONSTRUCTION, DEMOLITION AND ENGINEERING ACTIVITIES**
- **LIQUIDATION OF ENVIRONMENTAL BURDENS, DUMPS, WASTE**
- **FREIGHT ROAD TRANSPORT**



SOCIAL RESPONSIBILITY

OUR MAIN DOMAIN IS THE PROVISION OF RAIL TRANSPORT SERVICES, THE MOST ENVIRONMENTALLY FRIENDLY FORM OF TRANSPORT:

- CONTINUOUS MODERNISATION OF THE RAIL FLEET
- WITH THE AIM OF ACHIEVING THE HIGHEST ENVIRONMENTAL STANDARDS
- REDUCTION OF POWER CONSUMPTION AND WASTE
- ISO CERTIFICATION

WITH MORE THAN 2,000 EMPLOYEES, WE ARE ONE OF THE BIGGEST EMPLOYERS IN THE CZECH REPUBLIC:

- OCCUPATION HEALTH AND SAFETY
- HEALTH PROGRAMMES
- EMPLOYEE BENEFITS
- COOPERATION WITH STUDENTS AND UNIVERSITIES



CERTIFICATES

AWT GROUP SATISFIES INTERNATIONALLY RECOGNISED STANDARDS:

- **ČSN EN ISO 9001:2009** (QUALITY MANAGEMENT)
- **ČSN EN ISO 14001:2005** (ENVIRONMENTAL MANAGEMENT)
- **ČSN OHSAS 18001:2008** (OCCUPATION HEALTH AND SAFETY MANAGEMENT) – ONE OF THE FEW COMPANIES IN TRANSPORT TO HOLD THIS CERTIFICATE
- **ČSN EN ISO 50001:2012** (ENERGY MANAGEMENT)
- **SQAS** (WAGON CLEANING)
- **SQAS** (TRANSPORT/HANDLING OF CHEMICAL SUBSTANCES)
- **GMP + FSA B4** (SECURE TRANSPORT OF FEED)
- **AEO CERTIFICATION** (AUTHORISED ECONOMIC OPERATOR)



PKP CARGO GROUP

- **THE BIGGEST OPERATOR OF FREIGHT RAIL TRANSPORT IN POLAND AND THE SECOND LARGEST CARRIER IN THE EUROPEAN UNION**
- **PROVIDES A WIDE RANGE OF LOGISTIC SERVICES IN RAIL, ROAD AND SEA TRANSPORT**
- **OWNS THE LARGEST FLEET OF CARGO TRAINS IN POLAND (2,500 LOCOMOTIVES, 63,000 WAGONS)**
- **PKP CARGO GROUP INCLUDES THE SPECIALISED COMPANY PKP CARGO CONNECT (INTERMODAL TRANSPORT AND RAIL FORWARDING) AND PKP CARGOTABOR (MAINTENANCE AND MODERNISATION OF ROLLING STOCK)**
- **THE SHARES OF THE COMPANY HAVE BEEN LISTED ON THE WARSAW STOCK EXCHANGE SINCE 2013. THE PRIMARY SHAREHOLDER IS PKP S.A.**

